




Energy efficient window & doors with aluplast-technology

## uPVC WINDOWS YOUR PERFECT CHOICE






## **ECO Doors & Windows.** Specialist. For window and door systems.

Eco Doors & Windows is the first uPVC window and door company to establish itself in Wellington City. As Wellington has awoken to the benefits of uPVC windows and doors, our company has grown from a one man band to 3 companies throughout the North Island.

Ross McKitterick founded the business in 2010 when he was looking for a better solution for replacing windows in his home and he discovered uPVC. Now Aucklanders and Taurangians can benefit from Eco's many years of experience in the industry by getting in touch with Eco Auckland or Eco Tauranga. Both our Sales and Install teams know uPVC windows and doors inside-out and can't wait to help you out with your next project





Come with us on a journey through the **world of uPVC windows** and discover their shapes, colours, quality and energy efficiency.

## Table of Contents

Interesting facts	4
Window types and colours	5
Doors for every style	6
Product range	7
smart-slide   new generation of sliding doors	8
woodec and aludec	10
Hardware   essential background	12
Glazing   a visible part of the window	13
Noise reduction	14
Sound insulation	15
Energy efficiency	16
Tropical compound	17
BAL40 Windows	18
Unique Properties	19



# Interesting facts about uPVC windows

uPVC is the best and most suitable window material and its importance is constantly growing all over the world. It is not only used for construction, but also for everyday commodities such as clothes, car parts, drink bottles and medical applications.

The unparalleled material uPVC offers a whole range of outstanding product properties to create a window that remains unbeaten by any other raw material. Purchase costs of uPVC windows are far more economical than a comparable product made of wood or aluminium. There are great many of aspects that play a significant role when choosing new windows. For this reason, we would like to present you some interesting facts about uPVC windows that will help you with your decision making:

## 1. ENERGY EFFICIENCY OF UPVC WINDOWS

- use of lead-free uPVC raw material
- easy to recycle
- energy saving (in both production and thermal insulation)

## 2. QUALITY OF UPVC WINDOWS

- uPVC is completely harmless to humans
- excellent sound insulation, especially in the growing urban regions
- perfect thermal insulation
- durability and resistance (fire resistance, UV stability, wind resistance)
- the value of your home can be increased by integration of aluplast windows and doors
- very durable (uPVC windows have a life cycle of 30 years or more)

## 3. PERFORMANCE CHARACTERISTICS OF UPVC WINDOWS

- resistant to dirt and environmental conditions
- can be easily cleaned by using a mild detergent or simply soapy water
- resistant against termites and will never rot, rust or corrode
- cannot be deformed by moisture and temperature differences
- prevent development of mould and bacteria
- efficient for many years (without constant effort of conservation by painting or special maintenance measures)
- excellent burglary resistance

## 4. VARIETY OF DESIGNS

- appealing visual appearance with various types
- different shapes, e. g. semi-circular windows
- available in countless colour variations, laminated outside or on both sides
- suited for both new buildings and renovation of old buildings
- customised for individual requirements

### PLEASE NOTE

Windows are no minor matter: They let light into our homes and illuminate our lives. They create the positive feeling of home.

# Window types there is something for every taste

Window and door types are distinguished by their way of installation and opening.



### FIXED GLAZING

The glazing is inserted directly into the frame – there is no sash that could be opened.



### TILT-AND-TURN FUNCTION

The window can be opened to the inside like a casement and it can be tilted.



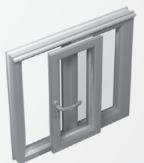
### CASEMENT – OUTWARD OPENING

The sash is to be opened outwards.



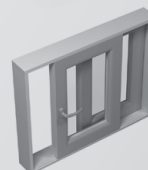
### AWNING – OPENING OUTWARD

The sash is to be opened outwards.



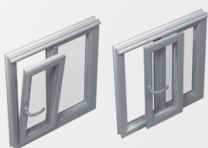
### MULTI-SLIDE

The sash can be slid to the side to open the window. Multiple sashes can be used to stack



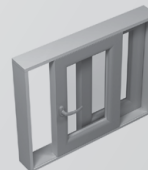
### SMART-SLIDE

The sash is shifted off the gasket horizontally and slides, providing superior tightness against weather and noise. Multiple sashes can be used to stack



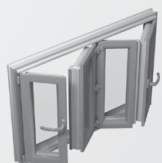
### TILT-AND-SLIDE

The sash can be tilted and slid to one side to open the window.



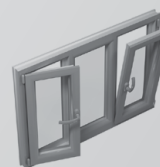
### LIFT-SLIDE

The sash is lifted vertically off the gasket and can slide the largest panels with ease. .

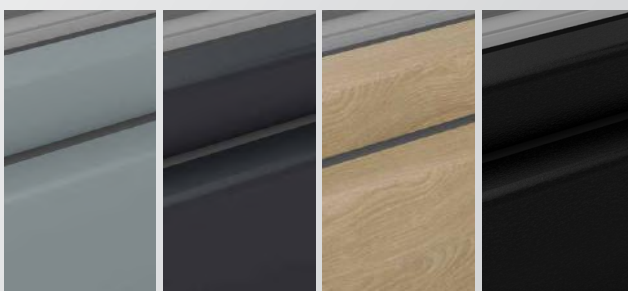


### SLIDE AND FOLD

The sashes can be folded, each running along a runner rail.



Many combinations available.



### uPVC WINDOWS ARE NOT NECESSARILY WHITE

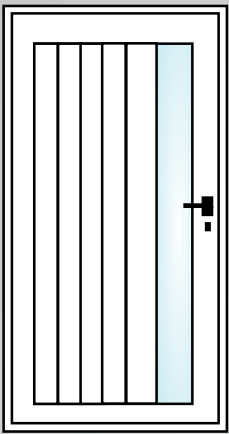
Colour your life and choose your favourite. The aluplast use a special manufacturing technique to apply the décor lamination foil on the uPVC window profiles. This technique guarantees an even structure, a uniform colour, and maximum weather resistance while meeting the highest requirements regarding climatic influences.



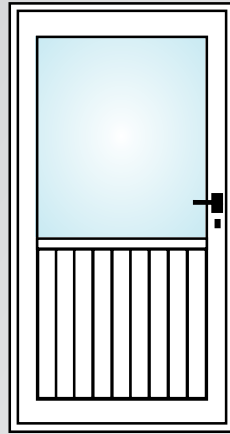
# Doors for every style

Whether you're replacing existing doors or starting from scratch with a New Build, we have a product to suit your needs. Our doors are custom-built to your specific requirements and are available in a range of colours if you're after something a bit more daring than your traditional white.

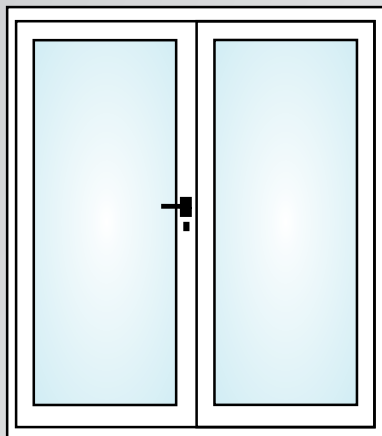
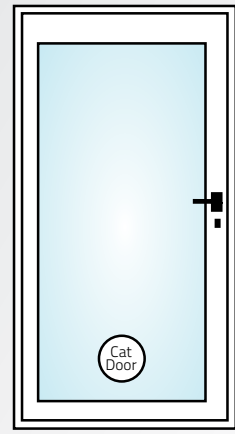
## Entrance Doors



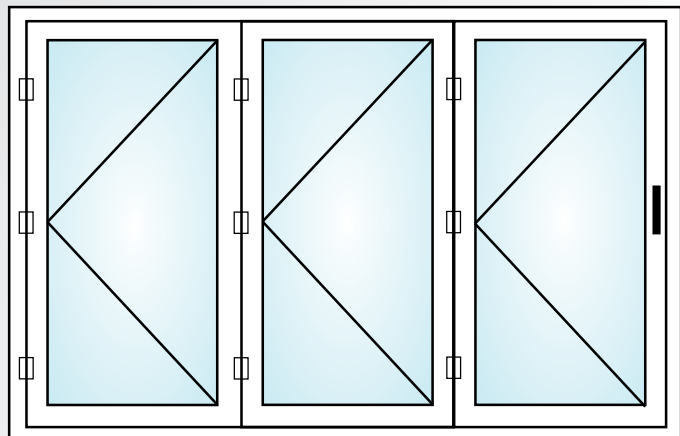
French Doors



Bifolding

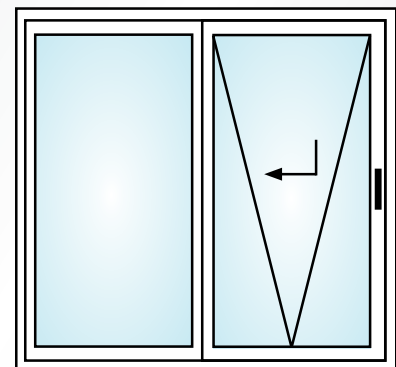
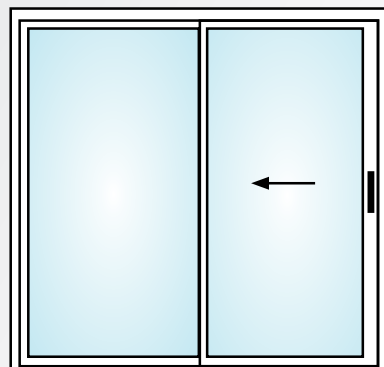
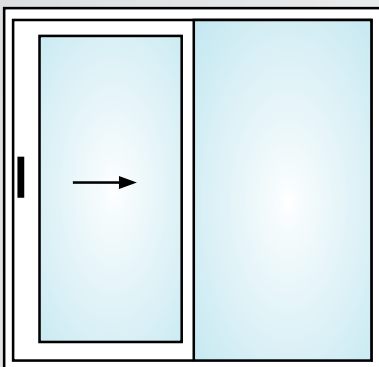


Smart Slide



In-line Slide  
3 panel stacker available

Tilt & Slide



# Product range, full of possibilities

Windows are a long-lasting investment. For this reason you should select a product suitable for your requirements.



## IDEAL 2000®

IDEAL 2000® is the most substantial 3 to 4-chamber window system with two levels of sealing and a 60 mm construction depth. The window offers the best possible price-performance ratio and a perfect economic efficiency. It is the right window solution for fixed, tilt-and-turn and casement openings. Many possible variations allow for the use of the system in the domain of commercial buildings as well as private homes.



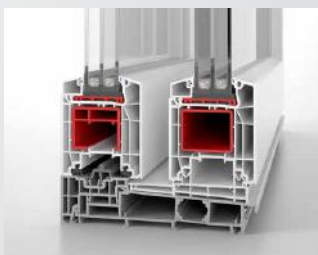
## IDEAL 4000®

With 5 chambers as a standard combination, sound insulation up to 45 dB and a construction depth of 70 mm, the IDEAL 4000® windows offer excellent thermal insulation properties – delivering a range of windows today, which satisfy the standards of tomorrow. It is the best suitable window for large doors for balconies and terraces.



## SLIDING SYSTEMS

The aluplast sliding window series with its slender design will meet your individual requirements. From economical window solutions to huge balcony doors, many options are possible.



## LIFT-SLIDE

With its smooth-running lifting mechanism, even huge sliding elements – with a width up to 3m, a construction depth of 85mm and with large reinforcements for the highest degree of stability – can be moved very easily. The wide opening provides a harmonious transition from living to outdoor areas without disturbing steps while maintaining best sealing values.



# LEAVES NOTHING TO BE DESIRED

Get into the new generation of sliding doors with smart-slide.

## smart-slide

- simple to operate
- recessed threshold solution
- WERS  $U_w$  rating as low as 1.1 W/m<sup>2</sup>K
- glazing and panel thickness up to 41 mm possible double and triple glazed)
- modern classic-line design
- concealed hardware technology
- scheme A (single door) and scheme C (bi-parting doors)
- available in numerous decor designs
- optional bonding inside (adhesive technology)
- Profile depth of 140 mm







### **GREAT STABILITY = LESS MAINTENANCE**

Why compromise? The new smart-slide door makes use of very stable hardware resulting from outstanding innovation. The sophisticated mechanism of the new aluplast sliding door simplifies the hardware technology used, resulting in superior sliding performance for years to come.



### **OUTSTANDING SEALING**



smart-slide scores highly for sealing owing to the innovative locking mechanism and the high-quality sealing surfaces with no brushes. Additional locking points offer outstanding sealing and even more security. The interplay between the various technical features ensures the smart-slide achieves extremely good sealing performance against air, wind, sound and driving rain.



### **LET'S GET TO THE POINT!**

This new generation slider brings a new standard and economy to premium sliding doors. With acoustic performance, airtightness, ease of use, low threshold possibilities and thermal performance exceeding all else at this price point, this slider is the superior choice for your project.

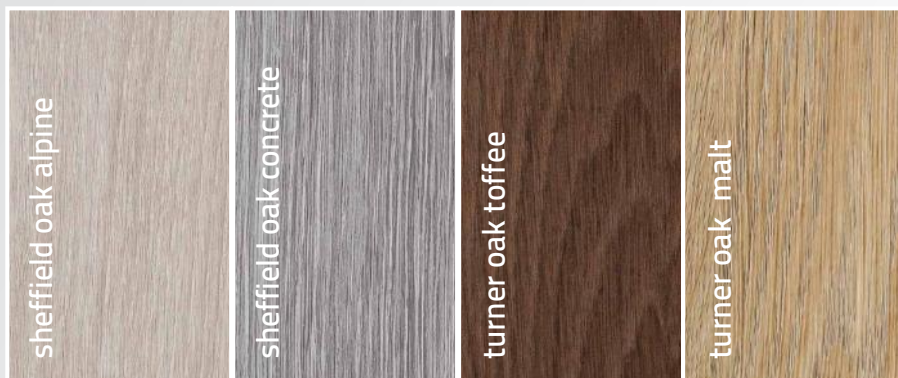




woodec  
inspired  
by nature

# Design variants

## The most beautiful style of refinement



An astonishing wood effect and unique feel, with all the advantages of a uPVC window. woodec not only looks like the natural material, it also feels particularly real and is virtually indistinguishable from real wood.



**NEW**

aludec  
inspired  
by style

Perfect aluminium look and a pleasant feel: aludec offers the high-quality look of an aluminium shell combined with easy processing and a pleasant feel.

It has never been easier and more resource-saving to produce a uPVC window in aluminium look!

aludec traffic white

aludec window grey

aludec umbra grey

aludec basalt grey

aludec jet black

aludec DB703

aludec anthracite grey

The new aludec give interior spaces a pleasant and contemporary atmosphere, while outside they give the house an upmarket appearance. It can be used for both interior and exterior surfaces.



# Hardware - essential background

Hardware has a wide range of functions. It connects the window frame with the sash and allows operation of windows and doors. For this reason, we would like to present some interesting facts about the Hardware in uPVC windows that will help you with your decision making



## **SASH LIFTER**

Tilt-and-turn hardware lifts the sash into the correct position with minimal effort and guarantees a long service life.



## **LOCKABLE HANDLE**

When it comes to security multiple options are available. This includes a lockable handle which can increase the window or door security by restricting operation as required.



## **TURNING HANDLE**

The essential operating control of a window fitting is the turning handle. A simple turn of the handle can open, close, tilt or fold the window or door.



## **MULTIPOINT LOCKING**

Increased security thanks to a multipoint locking system. The system guarantees basic security.

Based on the great variety of windows, there are hardware systems for all window types. The hardware is a significant component of the window, especially for handling and security. The hardware for the most common European tilt and turn systems offers the best safety, security and comfort for your home. However, good hardware for casement and sliding systems is also available.

## **PLEASE NOTE**

We will be happy to show you further detailed information on hardware.

# Glazing - a visible part of the window

The importance of window glass has also been integrated in your window choice. Many solutions are available:

## **DOUBLE GLAZING**

Double or even triple glazed units are separated by an air or other gas space like Argon, to reduce heat transfer and / or sound transmittance across a part of the building envelope. In modern insulated glass units, the space between the glass panes is kept dry by the use of desiccant and the edges are sealed to eliminate possible condensation and provide superior insulating properties.

## **LOW E GLASS**

Low Emissivity ("Low-E") glass has a special invisible coating bonded to the glass inside the double glazing unit. This coating reduces heat loss from the home, by essentially acting like a "heat mirror" that reflects heat back into your home. Low E can also reduce solar heat gain that can overheat your house, while also insulating your house from the temperature outside. Low-E glass greatly enhances the insulating performance by as much as an additional 60% compared to standard double glazing.

## **TOUGHENED GLASS**

A type of safety glass processed by controlled thermal or chemical treatments to increase its strength compared with normal glass. Fully toughened glass is approximately 4 to 5 times stronger than heat treated glass of the same thickness when exposed to uniform static pressure loads.

## **LAMINATED GLASS**

Two or more panes of glass permanently bonded together with one or more interlayer. Laminated glass offers good acoustic insulation and a high protection factor against burglary.

## **VISIBLE LIGHT TRANSMISSION**

VLT is the percentage of visible light passing through the glass. The higher the VLT, the more light is transmitted.

## **SOLAR HEAT GAIN COEFFICIENT**

The Solar Heat Gain Coefficient, SHGC, measures how well a window blocks heat from the sun. Therefore, the lower the SHGC, the lower the amount of heat gain. SHGC ratings are shown as a number between 0 and 1. The lower the number, the better the window is at blocking solar heat.



## **PLEASE NOTE**

The solar heat gain coefficient should be as low as possible while the light admission should be as high as possible. We will be pleased to help you.



# Noise reduction - feel the silence & the comfort

Open Window ~ 80 dB  
(heavy traffic)

Old Window ~ 60 dB  
(single glazed)

Standard Window ~ 48 dB  
(double glazed)

uPVC Window ~ 35 dB  
(IDEAL 4000 and  
IDEAL 2000  
noise reduction)

## INFLUENCING FACTORS

1. Frame
2. Glazing
3. Glass Packers
4. Installation

## PLEASE NOTE

Reduction of 10 dB (decibel)  
will reduce noise by 50 %

## NOISE PROTECTION

Being exposed to permanent, or even only to a short-term but intensive, noise, can lead to a harmful impact on human health. Thus, noise protection is an imperative. We can provide you with the best possible protection against unwanted negative noise effects.





# Sound insulation - for a better quality of life

dB (decibel) is commonly used in acoustics to quantify sound levels perceived by the human ear.

Noise has an immense impact on our quality of life. The results are sleep loss and continuous stress that can cause permanent damage to

our health. uPVC windows are an effective protection from noise and create a permanently pleasant atmosphere.



# Energy efficiency - living comfort and environmental protection



Innovative high-quality uPVC windows cut energy losses to a minimum. With uPVC windows you can contribute to the conservation of increasingly scarce resources and to the reduction of pollutant emissions. Combine environmental protection and living comfort by insulating with uPVC windows.

The U-value determines the heat transfer coefficient of the material. The w in this term stands for the entire window.

The calculation of this is based on the U-values and the size of each single material of all components. This means the glass, the frame material as well as the psi-value, which describes the heat flow generated through the insulated glass edge with the distance piece.

## U-VALUE ( $U_w$ )

= U-value glazing ( $U_g$ ) \* Area glazing ( $A_g$ )  
+ U-value frame ( $U_f$ ) \* Area frame ( $A_f$ )  
+ Psi-value ( $\Psi$ ) \* length of the edge bond (l)  
/ Area glazing ( $A_g$ ) + Area frame ( $A_f$ )

$$U_w = \frac{U_g \cdot A_g + U_f \cdot A_f + \Psi (PSI) \cdot l}{A_g + A_f}$$



## PLEASE NOTE

The lower the U-value, the better!



## Tropical compound - for regions with high UV radiation

aluplast can look back on more than 20 years of experience in providing tropical uPVC formulations to regions with very high levels of UV radiation.

In order to make sure that uPVC windows remain stable and robust even under harsh environmental conditions, aluplast developed a special uPVC compound called Tropical Mix. This “tropical” formulation and the profiles have been tested and certified by AAMA (American Architectural Manufacturers Association).

AAMA tests the profiles at accredited laboratories under natural weathering conditions. The profiles are tested in three different weathering stations in Ohio, Florida and Arizona for two years where they have to prove their stability against UV light, wind load and humidity.

In artificial and natural weathering tests, aluplast proved the profiles’ outstanding durability, weather resistance, and quality, and was finally awarded with the AAMA

certification. All tests, for example the Charpy impact test, were passed with ease and without any restrictions, even after two years of weathering.

Environmentally friendly calcium-zinc (CaZn) stabilizers ensure that you will enjoy your eco-friendly, high-quality windows and doors for many years to come. aluplast has excellent verified references in the Middle East, Asia, Africa and Australia regarding the successful use of our tropical formulation.

Today we are proud to say that we can supply customers worldwide with an extended tropical profile portfolio and that we are able to react flexibly to the different market requirements. Stay ahead of the times with innovative technologies developed by aluplast.





## Unique Properties

### **QUALITY - MADE IN GERMANY**

Experience and constant development play a crucial role in the production of uPVC windows. With close and cooperative partnerships with reliable and renowned suppliers, we focus on environmental protection, sustainability and guarantees the highest level of quality and performance.

The extruded aluplast uPVC window profiles are tested according to local standards and are subject to constant quality control.

### **RESPONSIBILITY - FOR THE ENVIRONMENT**

uPVC windows do not only present long-lasting durability but they can also be recycled which is another environmental advantage.

Plastics are up to 100% recyclable without loss of quality. Due to the fact that PVC windows are produced environmentally friendly, the PVC windows can be made out of recyclable material and can be re-used in the future to extend the lifecycles.

Up to 40% of a home's energy loss can come from the window and door area, these parts of the building envelope are the focus of the efforts to save valuable energy and reduce the costs for heating and/or cooling.

The uPVC windows of aluplast profiles are suitable even for the top ranked Passivhaus-Standard (Passive House Standard). This fact ensures the lowest energy consumption. Our profiles are also in compliance with the latest Environmental Product Declaration (EPD) according to the DIN ISO 14025 which reflects the superb results of the health – and environmental aspects of the uPVC in the whole life cycle.

### **INNOVATION - AT THE HIGHEST LEVEL**

Based on our expertise, we develop innovative high-quality products that set professional standards in our field. aluplast profiles exceed today's requirements for heat and noise insulation, burglary resistance and are of elegant design. To buy our products is to buy long lasting durability, to choose the finest quality, backed by a solid company with many years of experience.

Save energy, reduce costs and secure the future - with the Eco Group and aluplast



# Notes

A series of horizontal dotted lines for writing notes, spanning the width of the page.





**Wellington:**

Eco Doors & Windows

Phone: 04 974 8930

E-Mail: [sales@ecowindows.nz](mailto:sales@ecowindows.nz)

Website: [www.ecowindows.nz](http://www.ecowindows.nz)

Showroom: 29 Hutt Road, Thorndon



**Auckland:**

Eco Auckland

Phone: 021 277 0563

E-Mail: [sales@ecoauckland.nz](mailto:sales@ecoauckland.nz)

Website: [www.ecoauckland.nz](http://www.ecoauckland.nz)



**Tauranga:**

Eco Tauranga,

Phone: 027 552 6065

E-Mail: [sales@ecotauranga.nz](mailto:sales@ecotauranga.nz)

Website: [www.ecotauranga.nz](http://www.ecotauranga.nz)



[www.aluplast.com.au](http://www.aluplast.com.au)